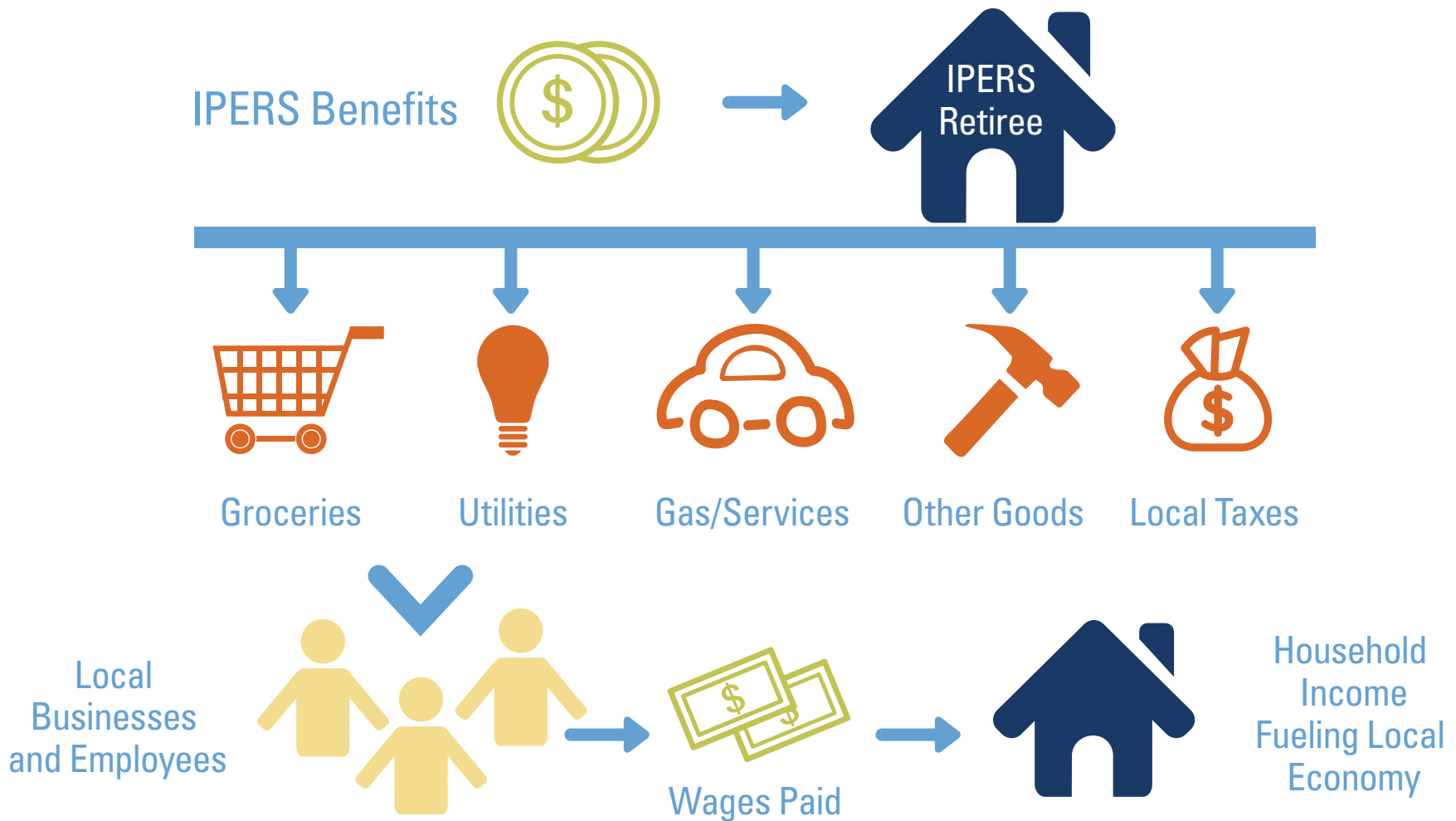


# RETIREMENT SECURITY

## benefits everyone.



## IPERS' Average Retiree



**22**

AVERAGE YEARS OF SERVICE BEFORE RETIREMENT



**61**

AGE WHEN PENSION STARTS

AVERAGE ANNUAL BENEFIT PAID

**\$16,000\***

\*Annual pension amount for a recent retiree is \$20,000

## An Important Piece of Your Retirement Plan



The cost of living rises over time. Plan for it while you're still working. IPERS does not include a guaranteed cost-of-living adjustment.